

Hillsboro-Deering High School

Community

Personalized

Progress

Purpose

Hillsboro –Deering High School Ukulele Unit!

DIY Ukulele

Unit Part I --Building

Part II -- Chords/Notes/Songs



Hillsboro-Deering High School

Community

Personalized

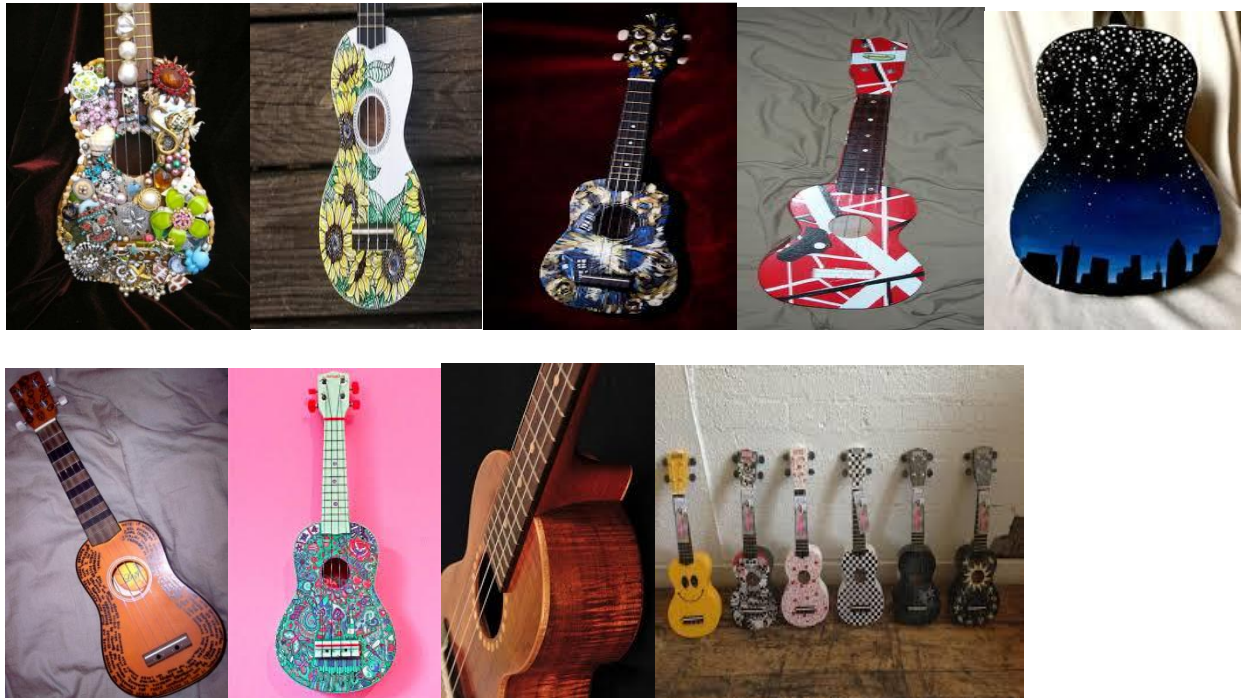
Progress

Purpose



UKEVEMBER Unit: PART ONE: DIY Ukelele Creation

Day One: Designing your Ukelele Art



Remember that you only get ONE - so be VERY CAREFUL and design wisely!

Student Directions:

1. Take home your design template and return NEXT CLASS with your design idea for check in and approval.

Hillsboro-Deering High School

Community

Personalized

Progress

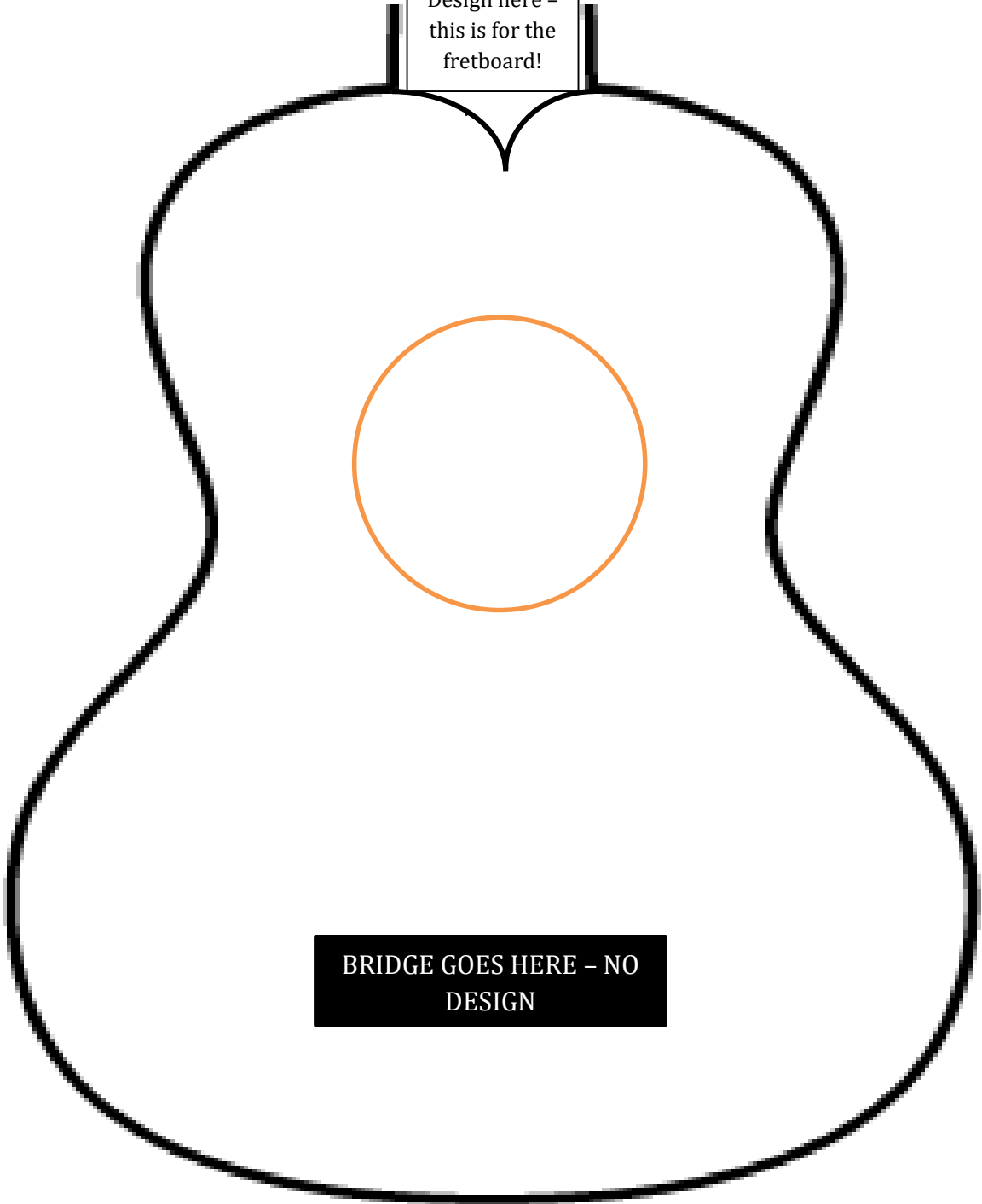
Purpose

Name : _____

Uke Design Template

Front

Don't Paint or
Design here -
this is for the
fretboard!



**BRIDGE GOES HERE - NO
DESIGN**

Hillsboro-Deering High School

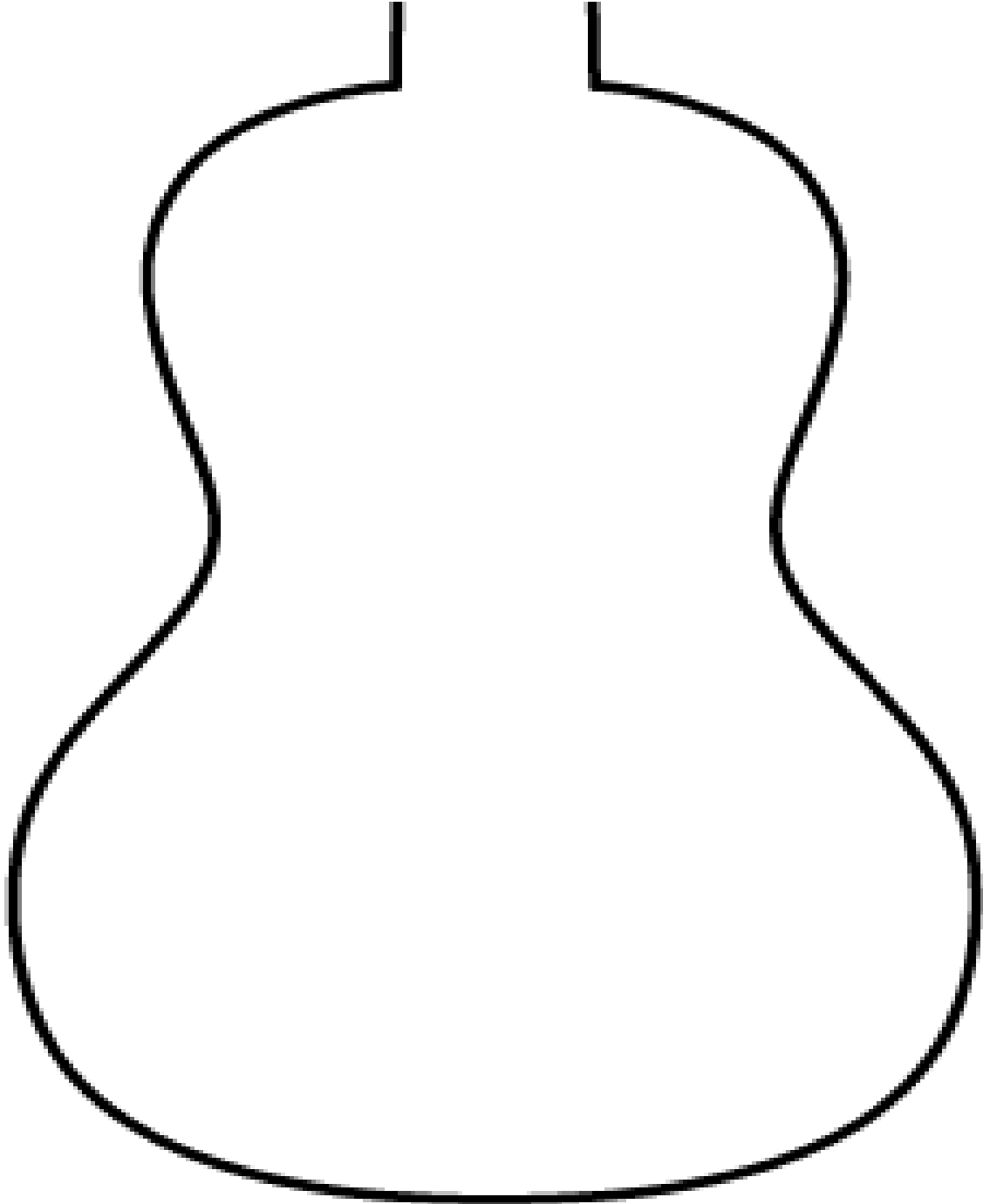
Community

Personalized

Progress

Purpose

Back



Hillsboro-Deering High School

Community

Personalized

Progress

Purpose

Day Two: Guitar Design, Fretboard and Neck Assembly

Materials: DIY Ukes, Sandpaper, Woodglue, Dremel, Power Sander, Clamps, Sharpies, Masking Tape, Decorating Materials

****** Note that photos were taken of the pilot class before we determined that completing the painting was better AFTER bridge/fretboard and nut attachment were completed!********

Student Directions:

1. All parts must stay **IN THE BLUE BOX**
2. Write name in Sharpie on the Blue Box.
3. Do NOT open the bag of screws, bridge, nut, strings and tuning machines.
4. Using the Top Bridge Placement Template, Pencil a rectangle of where the bridge will go so that you do not design over that spot (this needs to remain clear for Bridge adhesion later!)



5. Assemble the neck to the body with wood glue (sand to create even attachment).



Hillsboro-Deering High School

Community

Personalized

Progress

Purpose

6. Assemble the fretboard to the neck with wood glue and clamp for 1 hour at least for adhesion.



Day Three: Neck and Fretboard Sanding and Paint Week Directions

1. Remove clamps (if not removed already)
2. Sand fretboard/neck for smooth surface and connection between the two using sandpaper, the power sander or the Dremel for fine work.



3. When smooth, attach the nut to the top of the fretboard.



Hillsboro-Deering High School

Community

Personalized

Progress

Purpose

4. Cover the fretboard/nut with masking tape to protect from design paint, etc.



5. At end of day, take your box home and paint/stain/sharpie (WHATEVER) your body and **BACK OF NECK ONLY – NOT WHERE THE FRETBOARD IS PLACED**. You have one full week to complete this project.



Day Three: Bridge Adhesion

Materials: UKES, Sandpaper, Woodglue, Dremel, Power Sander, Clamps, Sharpies, Masking Tape, Decorating Materials

Student Directions:

1. Make sure that the rectangle is clear on the top and free from paint or stain.
2. Using wood glue, attach the bridge with screw holes toward the **BOTTOM** of the ukulele (we will not be using the screw holes or screws).
3. Clamp the bridge.



Hillsboro-Deering High School

Community

Personalized

Progress

Purpose

Day Four: Polyurethane Protective Coat

Materials: Hanger Rods (from file cabinets), Music stands, Polyurethane, Paint Brushes, Spray Clear Coat, Wood Glue, Masking Tape, VENTILATED AREA, masks if possible, cups/water for brush cleaning. If you use SHARPIE for decoration, do not use the poly, but use a spray gloss clear-coat.

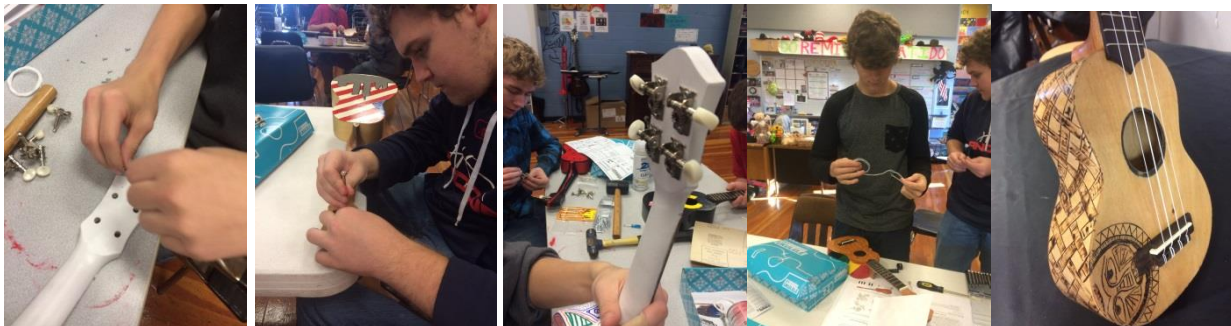


Day Five: Tuning Machines and Strings: Tuning

Materials: Tuning Machines, Strings, Small Philips head screwdrivers, tuners (Guitar Tuna App is awesome if you have the upgrade for the uke tuning)

Student Directions:

1. Nail holes to set where the tuning machines should be placed or USE an electric drill/screwdriver. (They are TOUGH to put in.)
2. Attach each machine to the headstock using the small screwdriver.
3. Attach the strings in the following order: G C E A



Hillsboro-Deering High School

Community

Personalized

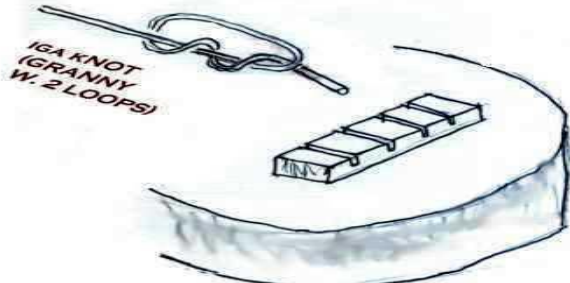
Progress

Purpose

©UKULELEWORLD.COM

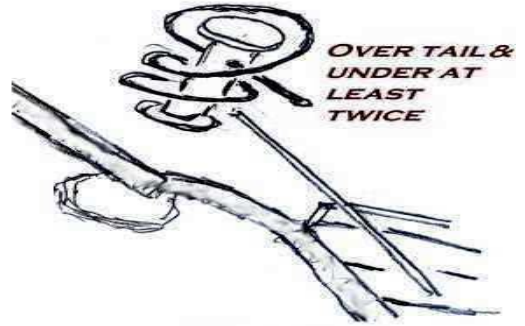


LACE-UP

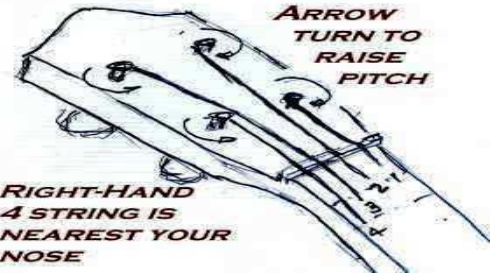


SLOT & KNOT

THERE ARE SEVERAL WAYS TO STRING YOUR UKE. HERE IS AN IDEA OR SO.....



OVER TAIL & UNDER AT LEAST TWICE



ARROW TURN TO RAISE PITCH

RIGHT-HAND 4 STRING IS NEAREST YOUR NOSE

4. Tuning: Notice that the C string and E string will be sound LOWER than the G string when tuned.

Congratulations! You are ready to PLAY!



Hillsboro-Deering High School

Community

Personalized

Progress

Purpose

Name: _____

Date: _____

Ukelele Project Self-Reflection

Think about what you did on this project, and how well it went. Write your comments in the right side column.

Name:	
List the major steps of the ukulele design in order of which they had to be completed.	
About Yourself	
What is the most important thing you learned in this project?	
What do you wish you had spent more time on or done differently?	
What part of the project did you do your best work on?	
About the Project:	
What was the most enjoyable part of this project?	
What was the least enjoyable part of this project?	
How could Mrs. Welch and/or Mr. Swasey change this project to make it better next time?	